



HE2 Heating Edge™

by Smith's Environmental Products

High Efficiency Perimeter Heating Equipment



HE2 Heating Edge™

by Smith's Environmental Products

High Efficiency Perimeter Heating Equipment

SPECIFICATIONS

Heating Edge™ Hot Water Performance Ratings	Flow Rate GPM	PD in ft of H ₂ O	Average Water Temperature (BTU/hr/ft @ AWT in °F)													
			90° F	100° F	110° F	120° F	130° F	140° F	150° F	160° F	170° F	180° F	190° F	200° F	210° F	
◇ TWO SUPPLIES PARALLEL	1 4	0.0044 0.0481	130 134	205 224*	290 314*	385 412*	460 516*	546 626*	637 741*	718 862*	813 976*	911 1115*	1009 1249*	1113 1386*	1215 1526	
TOP SUPPLY BOTTOM RETURN	1 4	0.0088 0.0962	101 142	165* 201*	226* 271*	289* 341*	356* 415*	426* 492*	498* 569*	572* 648*	647* 728*	725* 811*	805* 894*	885* 979*	970 1064	
BOTTOM SUPPLY TOP RETURN	1 4	0.0088 0.0962	99 135	162 195	221 259	283 305	349 380	418 464	488 552	561 634	634 710	710 793	788 874	867 959	957 1039	
BOTTOM SUPPLY NO RETURN	1 4	0.0044 0.0481	75 85	127 140	169 203	208 265	260 334	311 410	362 472	408 536	470 599	524 662	576 723	629 788	685 850	

Performance Notes: All ratings include a 15% heating effect factor • Materials of construction include all aluminum "patented" fins at 47.3 per LF, mechanically bonded to two 3/4" (075) type M copper tubes ("Coil Block") covered by a 22 gauge perforated, painted cover all mounted to a backplate. Please see dimensional drawing for fin shape and dimensions • EAT=65°F • Pressure drop in feet of H₂O per LF.

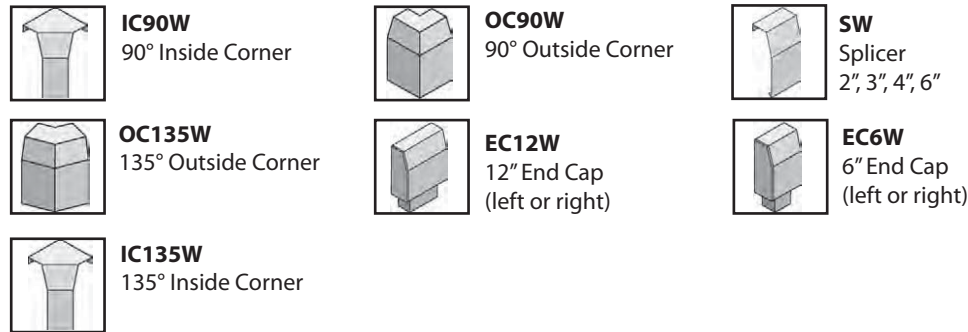
◇ **Installation Notes:** HE2's unique design allows performance outputs exceeding those of traditional single pipe baseboard designs. When installed with a parallel supply connection it is recommended that a minimum flow rate of 1.5 gpm be maintained to maximize efficiency and performance.



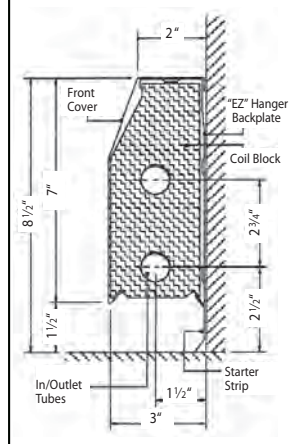
* Where marked (*) Heating Edge (HE2) output is based on performance tests witnessed by BSRIA. The test data can be verified on the BSRIA website (report 55944/2). This includes calibration information.

The catalogue data above is presented in accordance with the American IBR laboratory testing protocol for baseboard heating. This allows a 15% heating effect factor to be applied to the test values.

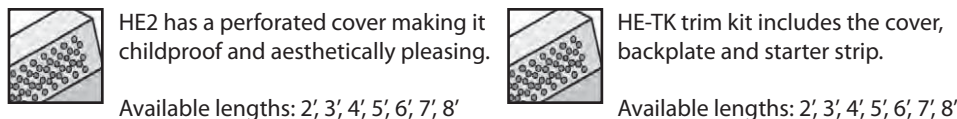
ACCESSORIES



DIMENSIONS



PRODUCTS



MODEL HE2

- ◆ High Capacity
- ◆ Superior Low Temperature Performance Ranges
- ◆ Scrub Board Fin Design For Maximum Airflow
- ◆ Easy To Install & Clean
- ◆ Rust Resistant
- ◆ Available In 2ft - 8ft Lengths



Heating Edge™ delivers high performance in style, and at low temperature ranges

High efficiency equipment requires a high efficiency heating element...

Geothermal heat pumps, solar thermal collectors and condensing boilers are all great ways to save energy and reduce fossil fuel usage. All three achieve their highest efficiencies when delivering low temperature water. The challenge faced when it comes to heating effectively with traditional baseboard is that supply water temperatures need to be at least 140°F in order to deliver enough BTUH's to sufficiently heat a space at design temperature. Not so with the Heating Edge HE2 high capacity hybrid element. Because the HE2 has the unique two-pipe design, it is able to deliver comparable BTUH's using 90°F water, all in an attractive package.

Heating Edge is perfect for use with the following low temperature heat generators:



GEOTHERMAL

CONDENSING BOILERS

SOLAR THERMAL

Heating Edge gives homeowners the performance and reliability they demand



Heating Edge™ Features and Benefits

**▲ Unique Coil Block System
Convection and radiant combined**
- Cover contact to Coil Block provides larger Radiant Surface combined with Conductive Chimneys created by Folded Fins

**■ New Enhanced Fin Design
more surface area; folded in front and back**
- Turbulated fin surface
- Deeper collars for maximum mechanical bond
- Extra hold off fold to prevent nesting
- Slightly different shape to maximize turbulated air flow

**◆ Two Pipe Design
high capacity outputs; variable piping options**
- The only two pipe reverse return product available
- Allows for a variety of piping methods and capacity enhancements (*please refer to back cover for performance table*)

Three Piece Design
- Eliminates all carriers, brackets, cradles, damper, damper vents and miscellaneous hardware resulting in quiet comfort

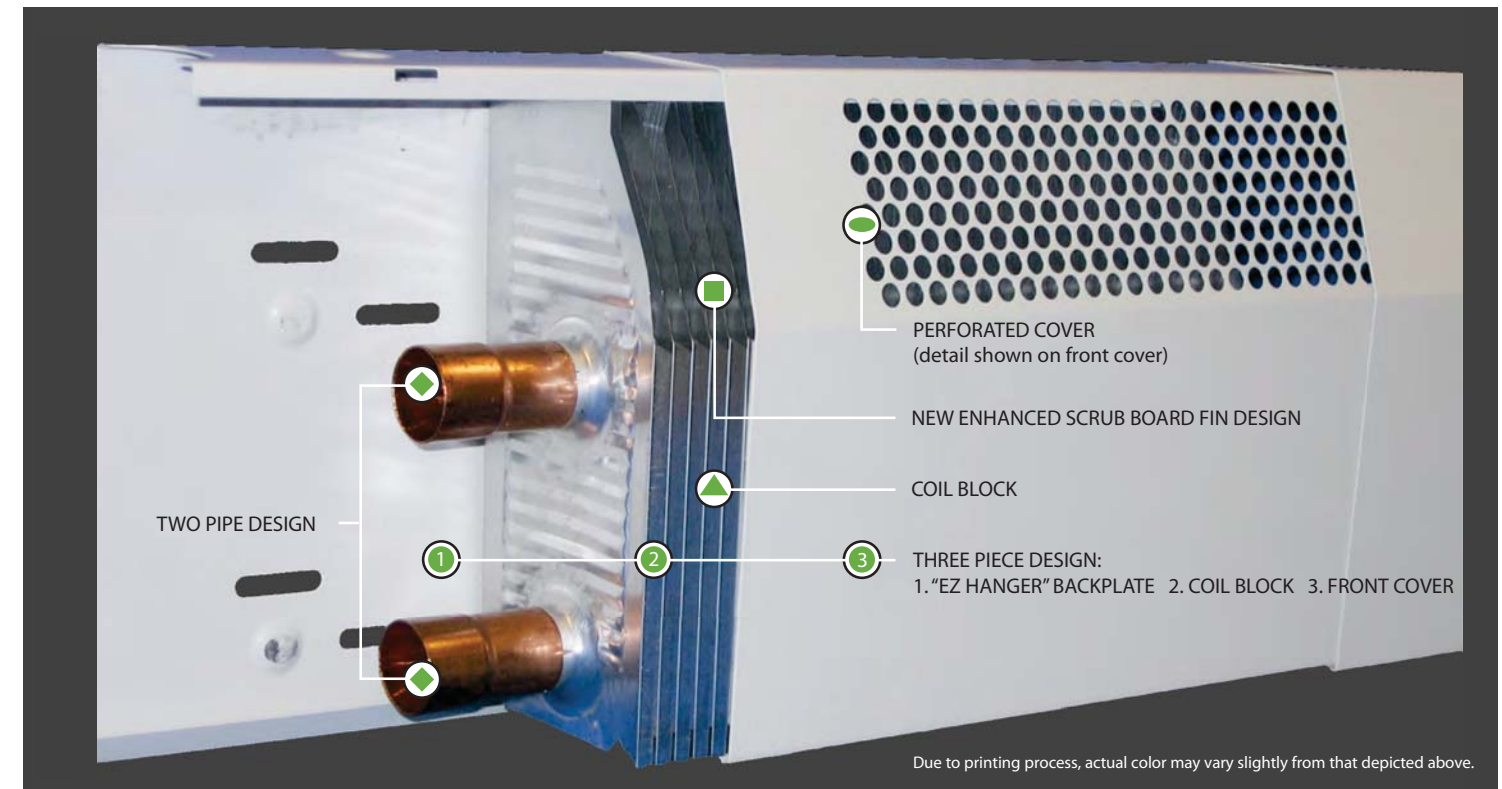
Perforated Cover Design
- Perforated holes of less than 1/4" prevent foreign objects from entering Coil Block
- Crayons, pencils and pens will not slip through
- Ideal for children's rooms

Easy to Clean
- Simply cleaned with the pass of a vacuum cleaner
- The healthier alternative

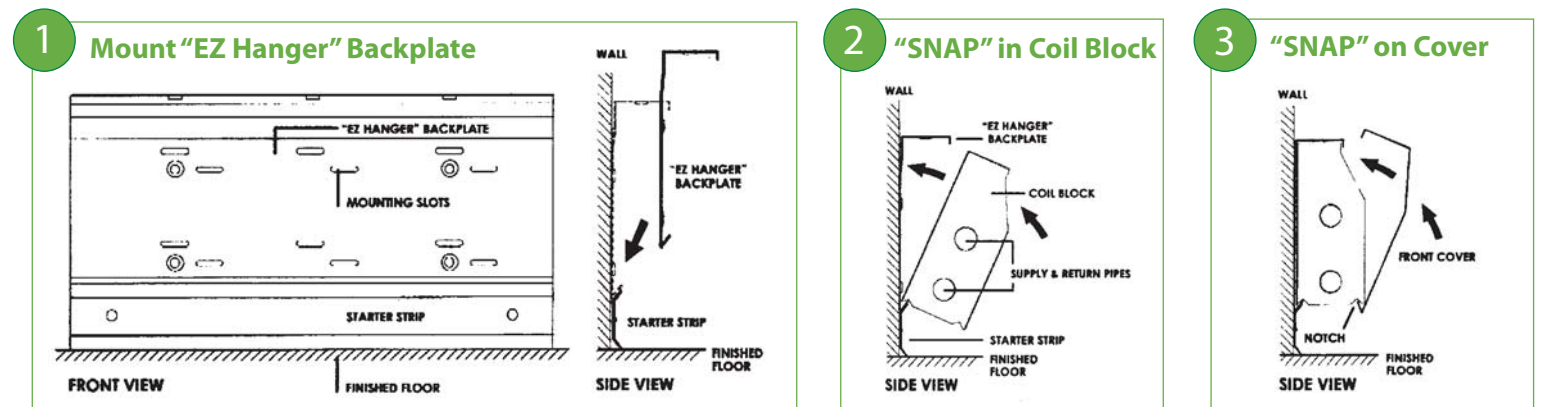
Rust Resistant
- Coil Block constructed of Aluminum and Copper
- Cover and "EZ Hanger" Backplate constructed of 22 gauge steel with a 2-part rust resistant paint with all edges and openings finished and coated
- Withstands the rigors of most bathroom applications

Rugged Exterior
Contact with Coil Block provides added support and rigidity to ensure cover to be dent resistant making the Heating Edge ideal for:

Offices, Dormitories, Restaurants, Children's Rooms, Hospitals, Schools, Nursing Homes, Lobbies, Apartments, Assisted Living Facilities



Installs in a "Snap" 1-2-3



Mount "EZ Hanger" Backplate
Fasten to wall through mounting slots provided (6 per foot). When installing on top of finish floor, utilize starter strip to maintain the minimum 1 3/4" air gap.

"SNAP" in Coil Block
Engage back notch onto lower lip of the "EZ Hanger" Backplate and pivot the Coil Block towards the wall until it "Snaps" into place.

"SNAP" on Cover
After piping connections are completed, place lower lip of cover into front notch in the Coil Block and pivot towards the wall until it "Snaps" over the "EZ Hanger" Backplate.