



INDUSTRIAL BELT DRIVE 16

Steam Heated Air Curtain

Data Sheet

For Mounting Heights To 16' (environmental separation)

STANDARD CONSTRUCTION

- Single speed T.E.F.C. motor - belt drive
- Gray powder coated exterior (Optional: Custom Color or Stainless)
- Split cabinet construction for fan assembly removal
- Removable access panels
- Top Mounting only
- Front air intake (Optional: top)
- Motor location top right (Optional: top left, front left or front right)

Coil Features:

- Galvanized steel casing
- 5/8" copper tube with .035" wall
- Aluminum fins
- Leak tested at 450 psi

**2 Year
Limited
Warranty**



MODEL	Nozzle Width (in)	Max Vel. at Nozzle (fpm)	Avg. Outlet Vel. (fpm)	Air Volume (cfm)	Outlet Vel. Uniformity	Power Rating (kW)	Motor @ HP	Coil Output (MBH)	Inlet Pressure (PSIG)	Condensate (lbs/hr)	Air Temp. Rise (°F)	Net Wt. (lbs)
IBC16-1060S	60.00	5,145	3,302	5,359	85%	2.80	1 @ 3	268.6	5	276.8	46°	499
IBC16-1072S	72.00	5,005	2,944	6,256	91%	2.90	1 @ 3	317.6	5	327.4	46°	554
IBC16-1084S	84.00	4,644	2,732	6,772	89%	3.00	1 @ 3	356.0	5	366.9	48°	609
IBC16-1096S	96.00	5,352	3,148	8,920	87%	4.10	1 @ 5	438.7	5	452.2	45°	724
IBC16-1108S	108.00	5,236	3,080	9,817	86%	4.20	1 @ 5	487.9	5	502.9	45°	860
IBC16-1120S	117.00	6,012	3,627	12,526	87%	4.80	1 @ 7.5	575.0	5	592.7	42°	906
IBC16-1132S	132.00	5,602	3,296	12,839	86%	4.90	1 @ 7.5	617.7	5	636.7	44°	977
IBC16-1144S	144.00	5,225	3,074	13,062	85%	5.40	1 @ 7.5	649.8	5	669.8	45°	1,032
IBC16-1156S	156.00	4,943	2,908	13,388	84%	5.50	1 @ 7.5	683.6	5	704.6	47°	1,097
IBC16-1168S	168.00	5,203	3,061	15,176	89%	7.00	1 @ 7.5	756.5	5	779.7	46°	1,217
IBC16-1180S	180.00	5,143	3,026	16,073	87%	7.10	1 @ 7.5	805.6	5	830.3	46°	1,300
IBC16-1192S	192.00	5,352	3,148	17,840	87%	8.20	1 @ 10	877.4	5	904.4	45°	1,380

NOTES:

1. Operation at 50 Hz will generate approximately a 17% reduction in performance.
2. Performance data based on AMCA licensed data from unheated IDC16 units.
3. Coil performance based on 65°F entering air temperature.
4. Standard connection same end supply/return (Optional: opposite end supply/return).
5. Coil should be field supplied with a solenoid valve that energizes only when air curtain is energized. Consideration must be taken for freeze protection when necessary.
6. Maximum leaving air temperature shall not exceed 120°F.
7. Consult factory for alternate steam pressures or opposite end supply/return connections performance data.
8. Vertically mounted Industrial Belt Drive air curtains not available.

See sheet EP-434 for amp draws/total load requirements.

MODEL NUMBER CONFIGURATION

IBC16-1 060 S D-F T-SS

Series	# of Motors	Opening Width	Heat	Voltage	Intake	Motor Location	Opt. Cabinet Finish
IBC16	1	060" - 192"	S=Steam Heated	D=208/3/60 E=240/3/60 H=480/3/60 I=600/3/60 T=380/3/50	T=Top F=Front	T=Top F=Front	SS=Stainless Steel CC=Custom Color

Sound level measured 10' (3m) from the unit in free field:
3, 5, 7½ & 10 hp motor(s):
68 dBA, 70 dBA, 72 dBA & 73 dBA

Berner reserves the right to alter specifications without prior notice.

www.berner.com Berner International 800.245.4455
111 Progress Ave. / New Castle / PA / 16101 / USA

DS-434
December, 2018



INDUSTRIAL BELT DRIVE 16

Steam Heated Air Curtain Electrical Performance Sheet

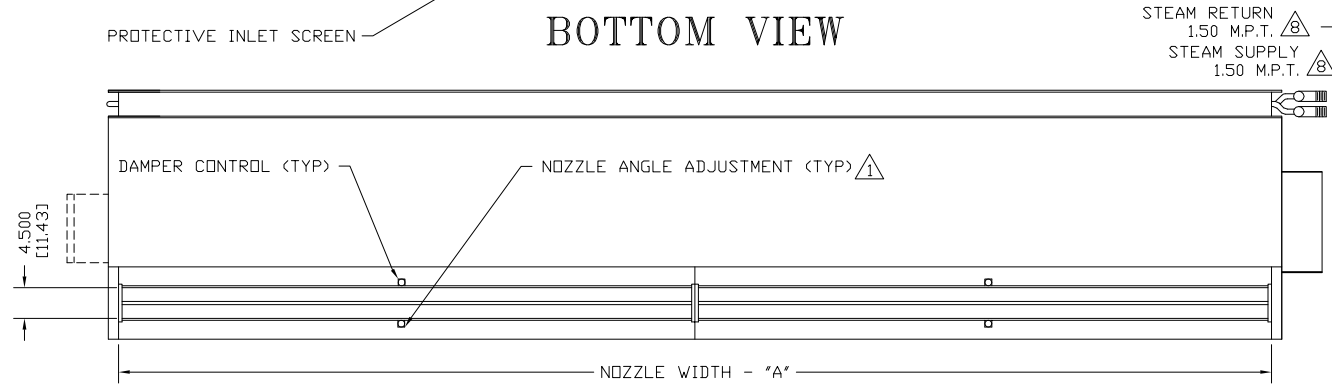
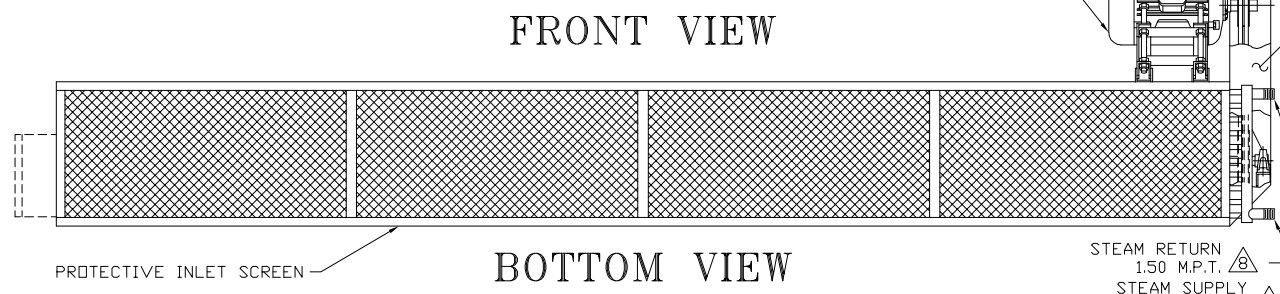
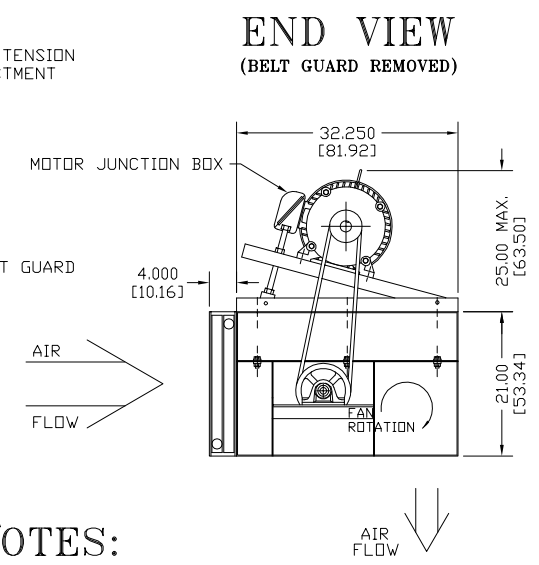
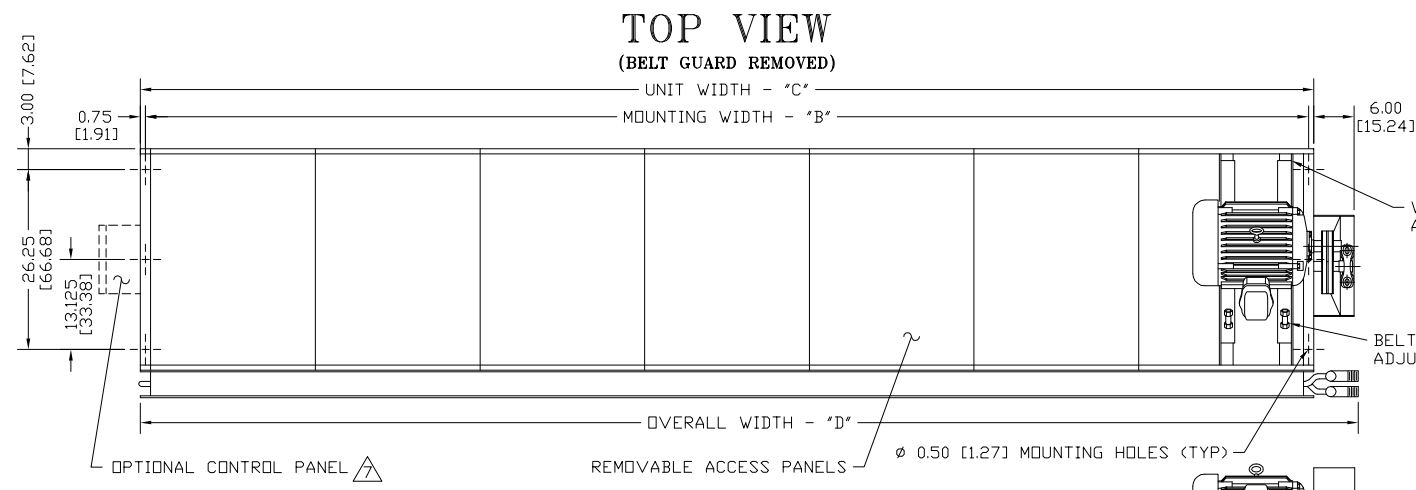
MODEL	Qty @ HP	208/3/60 (voltage code D) TOTAL MOTOR AMP DRAW			240/3/60 (voltage code E) TOTAL MOTOR AMP DRAW			480/3/60 (voltage code H) TOTAL MOTOR AMP DRAW		
		# CKTS	AMPS PER CIRCUIT	BREAKER RATING PER CIRCUIT	# CKTS	AMPS PER CIRCUIT	BREAKER RATING PER CIRCUIT	# CKTS	AMPS PER CIRCUIT	BREAKER RATING PER CIRCUIT
IBC16-1060S IBC16-1072S IBC16-1084S	1 @ 3	1	8.4	15	1	7.8	15	1	3.9	15
IBC16-1096S IBC16-1108S	1 @ 5	1	13.6	30	1	12.3	30	1	6.2	15
IBC16-1120S IBC16-1132S IBC16-1144S IBC16-1156S IBC16-1168S IBC16-1180S	1 @ 7.5	1	20.0	50	1	18.2	45	1	9.1	25
IBC16-1192S	1 @ 10	1	26.5	60	1	23.9	60	1	12.0	30

MODEL	Qty @ HP	600/3/60 (voltage code I) TOTAL MOTOR AMP DRAW			380/3/50 (voltage code T) TOTAL MOTOR AMP DRAW		
		# CKTS	AMPS PER CIRCUIT	BREAKER RATING PER CIRCUIT	# CKTS	AMPS PER CIRCUIT	BREAKER RATING PER CIRCUIT
IBC16-1060S IBC16-1072S IBC16-1084S	1 @ 3	1	3.2	15	1	3.9	15
IBC16-1096S IBC16-1108S	1 @ 5	1	5.1	15	1	6.2	15
IBC16-1120S IBC16-1132S IBC16-1144S IBC16-1156S IBC16-1168S IBC16-1180S	1 @ 7.5	1	7.2	15	1	9.1	25
IBC16-1192S	1 @ 10	1	9.6	20	1	12.0	30

Berner reserves the right to alter specifications without prior notice.

IBC16

STEAM HEATED FRONT INTAKE SAME END SUP./RET.



NOTES:

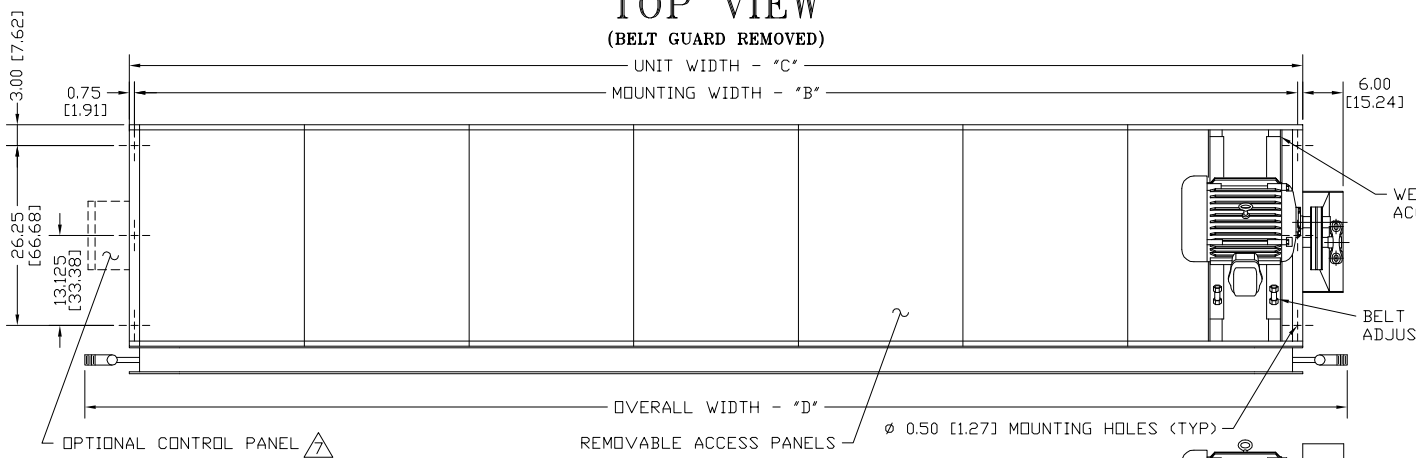
- 1 AIR CURTAIN MUST BE INSTALLED SO AIR STREAM IS NOT OBSTRUCTED WHEN DEFLECTED 20° TO EITHER SIDE OF C.
- 2 ELECTRICAL CONNECTIONS TO BE FLEXIBLE.
- 3 FIELD VERIFY DIMENSIONS.
- 4 ANCHORS TO SUPPORTING STRUCTURE BY OTHERS.
- 5 ADEQUACY OF SUPPORTING STRUCTURE IS TO BE VERIFIED BY A PROFESSIONAL STRUCTURAL ENGINEER.
- 6 LETTER "S" IN MODEL NUMBER DESIGNATES, STEAM UNIT. "F" DESIGNATES FRONT INTAKE. "T" IS TOP MOTOR.
- 7 OPTIONAL CONTROL PANEL AVAILABLE: LEFT HAND MOUNT, RIGHT HAND MOUNT, OR REMOTE. PLEASE SPECIFY.
- 8 COIL CONNECTIONS AS SHOWN, OPPOSITE AND SAME END CONNECTIONS AVAILABLE, PLEASE SPECIFY.
- 9 DIMENSIONS IN INCHES [CENTIMETERS].

MODEL	NOZZLE WIDTH "A"	MOUNTING WIDTH "B"	UNIT WIDTH "C"	OVERALL WIDTH "D"
IBC16-1060S-FT	60.00 [152.40]	61.50 [156.21]	63.00 [160.02]	69.50 [176.53]
IBC16-1072S-FT	72.00 [182.88]	73.50 [186.69]	75.00 [190.50]	81.50 [207.01]
IBC16-1084S-FT	84.00 [213.36]	85.50 [217.17]	87.00 [220.98]	93.50 [237.49]
IBC16-1096S-FT	96.00 [243.84]	97.50 [247.65]	99.00 [251.46]	105.50 [267.97]
IBC16-1108S-FT	108.00 [274.32]	109.50 [278.13]	111.00 [281.94]	117.50 [298.45]
IBC16-1120S-FT	117.00 [297.18]	118.50 [300.99]	120.00 [304.80]	126.50 [321.31]
IBC16-1132S-FT	132.00 [335.28]	133.50 [339.09]	135.00 [342.90]	141.50 [359.41]
IBC16-1144S-FT	144.00 [365.76]	145.50 [369.57]	147.00 [373.38]	153.50 [389.89]
IBC16-1156S-FT	156.00 [396.24]	157.50 [400.05]	159.00 [403.86]	165.50 [420.37]
IBC16-1168S-FT	168.00 [426.72]	169.50 [430.53]	171.00 [434.34]	177.50 [450.85]
IBC16-1180S-FT	180.00 [457.20]	181.50 [461.01]	183.00 [464.82]	189.50 [481.33]
IBC16-1192S-FT	192.00 [487.68]	193.50 [491.49]	195.00 [495.30]	201.50 [511.81]

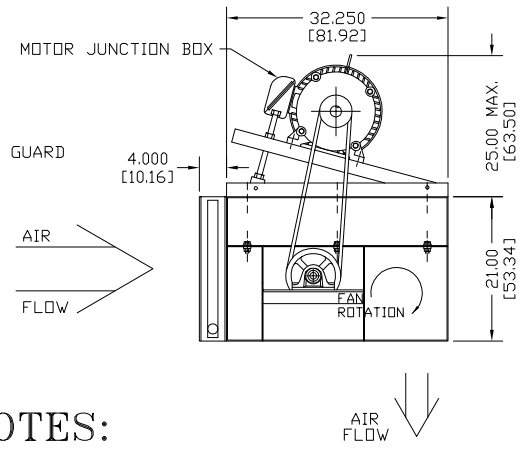
PROJECT	
LOCATION	
ARCHITECT	
ENGINEER	
DWG. NO.	IBC16-STM1
DATE	10JUNE14
BY	S. Beil
REPLACES	-
BY	-
TITLE:	BERNER MODEL IBC16 AIR CURTAIN FRONT INTAKE - STEAM HEATED SYSTEM
	BERNER INTERNATIONAL CORP. NEW CASTLE, PA.

IBC16 STEAM HEATED FRONT INTAKE OPP. END SUP./RET.

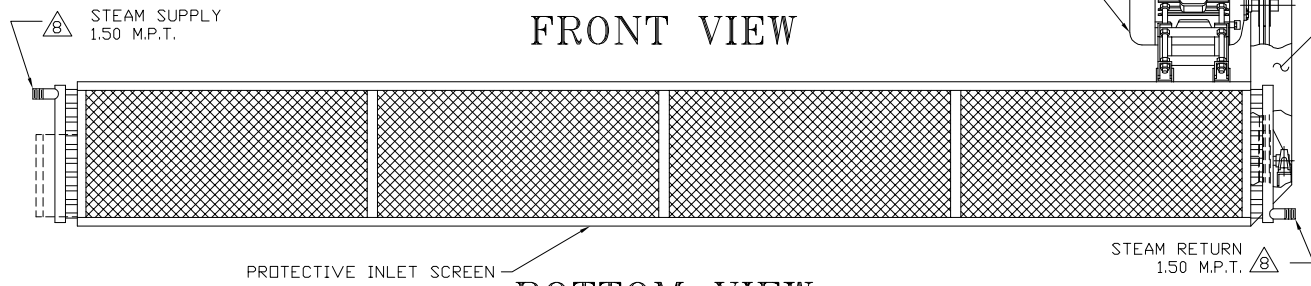
TOP VIEW (BELT GUARD REMOVED)



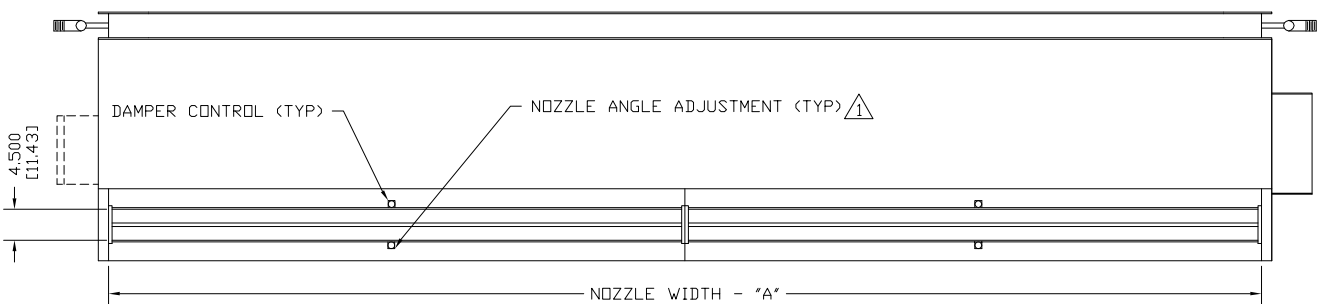
END VIEW (BELT GUARD REMOVED)



FRONT VIEW



BOTTOM VIEW



NOTES:

- 1 AIR CURTAIN MUST BE INSTALLED SO AIR STREAM IS NOT OBSTRUCTED WHEN DEFLECTED 20° TO EITHER SIDE OF C.
- 2 ELECTRICAL CONNECTIONS TO BE FLEXIBLE.
- 3 FIELD VERIFY DIMENSIONS.
- 4 ANCHORS TO SUPPORTING STRUCTURE BY OTHERS.
- 5 ADEQUACY OF SUPPORTING STRUCTURE IS TO BE VERIFIED BY A PROFESSIONAL STRUCTURAL ENGINEER.
- 6 LETTER "S" IN MODEL NUMBER DESIGNATES, STEAM UNIT. "F" DESIGNATES FRONT INTAKE. "T" IS TOP MOTOR.
- 7 OPTIONAL CONTROL PANEL AVAILABLE: LEFT HAND MOUNT, RIGHT HAND MOUNT, OR REMOTE. PLEASE SPECIFY.
- 8 COIL CONNECTIONS AS SHOWN, OPPOSITE AND SAME END CONNECTIONS AVAILABLE, PLEASE SPECIFY.
- 9 DIMENSIONS IN INCHES [CENTIMETERS].

MODEL	NOZZLE WIDTH "A"	MOUNTING WIDTH "B"	UNIT WIDTH "C"	OVERALL WIDTH "D"
IBC16-1060S-FT	60.00 [152.40]	61.50 [156.21]	63.00 [160.02]	76.00 [193.04]
IBC16-1072S-FT	72.00 [182.88]	73.50 [186.69]	75.00 [190.50]	88.00 [223.52]
IBC16-1084S-FT	84.00 [213.36]	85.50 [217.17]	87.00 [220.98]	100.00 [254.00]
IBC16-1096S-FT	96.00 [243.84]	97.50 [247.65]	99.00 [251.46]	112.00 [284.48]
IBC16-1108S-FT	108.00 [274.32]	109.50 [278.13]	111.00 [281.94]	124.00 [314.96]
IBC16-1120S-FT	117.00 [297.18]	118.50 [300.99]	120.00 [304.80]	133.00 [337.82]
IBC16-1132S-FT	132.00 [335.28]	133.50 [339.09]	135.00 [342.90]	148.00 [375.92]
IBC16-1144S-FT	144.00 [365.76]	145.50 [369.57]	147.00 [373.38]	160.00 [406.40]
IBC16-1156S-FT	156.00 [396.24]	157.50 [400.05]	159.00 [403.86]	172.00 [436.88]
IBC16-1168S-FT	168.00 [426.72]	169.50 [430.53]	171.00 [434.34]	184.00 [467.36]
IBC16-1180S-FT	180.00 [457.20]	181.50 [461.01]	183.00 [464.82]	196.00 [497.84]
IBC16-1192S-FT	192.00 [487.68]	193.50 [491.49]	195.00 [495.30]	208.00 [528.32]

PROJECT		
LOCATION		
ARCHITECT		
ENGINEER		
DWG. NO.	IBC16-STM2	TITLE: BERNER
DATE	10JUNE14	MODEL IBC16 AIR CURTAIN
BY	S. Beil	FRONT INTAKE - STEAM HEATED SYSTEM
REPLACES	-	
BY	-	BERNER INTERNATIONAL CORP. NEW CASTLE, PA.