



INDUSTRIAL BELT DRIVE 16

Positive Indirect Gas Heated Air Curtain

Data Sheet

For Door Heights To 16' (environmental separation)

STANDARD CONSTRUCTION

- Single speed T.E.F.C. motor - belt drive
- Gray powder coated exterior (Optional: Custom Color or Stainless)
- Split cabinet construction for fan assembly removal
- Removable access panels
- Top Mounting only
- Front air intake only
- Motor location top right (Optional: top left)

- Factory mounted duct transition with bottom access panels
- Field installed ETL (US and Canada) & AHRI Certified indirect gas heater(s):
 - Aluminized steel heat exchanger (Optional: Stainless)
 - Steel cabinet with beige finish
 - Spark ignited pilot
 - Power venter
 - Separate 120V power supply required (Optional: transformer for single point connection)

**2 Year
Limited
Warranty**



MODEL	Nozzle Width (in)	Max Vel. at Nozzle (fpm)	Avg. Outlet Vel. (fpm)	Air Volume (cfm)	Outlet Vel. Uniformity	Power Rating (kW)	Motor @ HP	Heater(s) @ Input (MBH)	Total Heater Output (MBH)	Air Temp. Rise (°F)	Net Wt. Air Curtain (lbs)	Net Wt. Duct Trans. (lbs)	Net Wt. Heater (lbs)
IBC16-1060G	60.00	5,145	3,302	5,359	85%	2.80	1 @ 3	1 @ 230.0	184.0	32°	425	79	225
IBC16-1072G	72.00	5,005	2,944	6,256	91%	2.90	1 @ 3	1 @ 300.0	240.0	35°	471	94	270
IBC16-1084G	84.00	4,644	2,732	6,772	89%	3.00	1 @ 3	1 @ 300.0	240.0	33°	517	109	270
IBC16-1096G	96.00	5,352	3,148	8,920	87%	4.10	1 @ 5	1 @ 390.0	312.0	32°	623	123	285
IBC16-1108G	108.00	5,236	3,080	9,817	86%	4.20	1 @ 5	2 @ 230.0	368.0	35°	749	117	2 @ 225
IBC16-1120G	117.00	6,012	3,627	12,526	87%	4.80	1 @ 7.5	2 @ 300.0	480.0	35°	789	128	2 @ 270
IBC16-1132G	132.00	5,602	3,296	12,839	86%	4.90	1 @ 7.5	2 @ 300.0	480.0	34°	846	147	2 @ 270
IBC16-1144G	144.00	5,225	3,074	13,062	85%	5.40	1 @ 7.5	2 @ 300.0	480.0	34°	892	161	2 @ 270
IBC16-1156G	156.00	4,943	2,908	13,388	84%	5.50	1 @ 7.5	2 @ 345.0	552.0	38°	948	176	2 @ 285
IBC16-1168G	168.00	5,203	3,061	15,176	89%	7.00	1 @ 7.5	2 @ 345.0	552.0	34°	1,059	191	2 @ 285
IBC16-1180G	180.00	5,143	3,026	16,073	87%	7.10	1 @ 7.5	2 @ 390.0	624.0	36°	1,130	206	2 @ 285
IBC16-1192G	192.00	5,352	3,148	17,840	87%	8.20	1 @ 10	2 @ 390.0	624.0	32°	1,201	221	2 @ 285

NOTES:

1. Operation at 50 Hz will generate approximately a 17% reduction in performance.
2. Performance data based on AMCA licensed data from unheated IDC16 units.
3. Maximum leaving air temperature shall not exceed 120°F.
4. Duct transition is factory mounted to air curtain and requires individual support.
5. Gas heater(s) shall not be directly connected to transition and require individual support.
6. Maximum gas supply pressure: 1/2 psi, 8 ounces, or 14 inches water column.
7. Vertically mounted Industrial Belt Drive air curtains not available.

See sheet EP-438 for amp draws/total load requirements.

MODEL NUMBER CONFIGURATION

IBC16-1 060 G D-F T-SS

Series	# of Motors	Opening Width	Heat	Voltage	Intake	Motor Location	Opt. Cabinet Finish
IBC16	1	060" - 192"	G=Indirect Gas Heated	D=208/3/60 E=240/3/60 H=480/3/60 I=600/3/60 T=380/3/50	F=Front	T=Top	SS=Stainless Steel CC=Custom Color

Sound level measured 10' (3m) from the unit in free field:
3, 5, 7½ & 10 hp motor(s):
68 dBA, 70 dBA, 72 dBA & 73 dBA

Berner reserves the right to alter specifications without prior notice.

www.berner.com Berner International 800.245.4455
111 Progress Ave. / New Castle / PA / 16101 / USA

DS-438
January, 2015



INDUSTRIAL BELT DRIVE 16

Positive Indirect Gas Heated Air Curtain
Electrical Performance Sheet

208/3/60 (voltage code D)												
TOTAL MOTOR AMP DRAW												
					MULTIPLE CKT - MOTOR PANEL & HEATER				SINGLE CKT - MOTOR PANEL & XFMR FOR HTR.			
MODEL	HEATER MBH	Temp Rise °F	Qty @ HP	# CKTS	AMPS PER CIRCUIT		BREAKER RATING PER CIRCUIT		# CKTS	XFMR KVA	AMPS PER CIRCUIT (including XFMR)	BREAKER RATING PER CIRCUIT
					MOTOR 208V CKT	HEATER 120V CKT	MOTOR 208V CKT	HEATER 120V CKT				
IBC16-1060G	1 @ 230	32	1 @ 3	2	8.4	9.0	15	15	1	1	13.2	20
IBC16-1072G	1 @ 300	35	1 @ 3	2	8.4	9.0	15	15	1	1	13.2	20
IBC16-1084G	1 @ 300	33	1 @ 3	2	8.4	9.0	15	15	1	1	13.2	20
IBC16-1096G	1 @ 390	32	1 @ 5	2	13.6	9.0	30	15	1	1	18.4	30
IBC16-1108G	2 @ 230	35	1 @ 5	3	13.6	9.0/9.0	30	15/15	1	2	23.2	30
IBC16-1120G	2 @ 300	35	1 @ 7.5	3	20.0	9.0/9.0	50	15/15	1	2	29.6	50
IBC16-1132G	2 @ 300	34	1 @ 7.5	3	20.0	9.0/9.0	50	15/15	1	2	29.6	50
IBC16-1144G	2 @ 300	34	1 @ 7.5	3	20.0	9.0/9.0	50	15/15	1	2	29.6	50
IBC16-1156G	2 @ 345	38	1 @ 7.5	3	20.0	9.0/9.0	50	15/15	1	2	29.6	50
IBC16-1168G	2 @ 345	34	1 @ 7.5	3	20.0	9.0/9.0	50	15/15	1	2	29.6	50
IBC16-1180G	2 @ 390	36	1 @ 7.5	3	20.0	9.0/9.0	50	15/15	1	2	29.6	50
IBC16-1192G	2 @ 390	32	1 @ 10	3	26.5	9.0/9.0	60	15/15	1	2	36.1	60

Page 1 of 5

Berner reserves the right to alter specifications without prior notice.

www.berner.com **Berner International** 800.245-4455
111 Progress Ave. / New Castle / PA / 16101 / USA

EP-438
December, 2018



INDUSTRIAL BELT DRIVE 16

**Positive Indirect Gas Heated Air Curtain
Electrical Performance Sheet**

240/3/60 (voltage code E)														
TOTAL MOTOR AMP DRAW														
MULTIPLE CKT - MOTOR PANEL & HEATER														
MODEL	HEATER MBH	Temp Rise °F	Qty @ HP	# CKTS	AMPS PER CIRCUIT		BREAKER RATING PER CIRCUIT		# CKTS	XFMR KVA	AMPS PER CIRCUIT (including XFMR)	BREAKER RATING PER CIRCUIT	SINGLE CKT - MOTOR PANEL & XFMR FOR HTR.	
					MOTOR 240V CKT	HEATER 120V CKT	MOTOR 240V CKT	HEATER 120V CKT						
IBC16-1060G	1 @ 230	32	1 @ 3	2	7.8	9.0	15	15	1	1	12.0	20		
IBC16-1072G	1 @ 300	35	1 @ 3	2	7.8	9.0	15	15	1	1	12.0	20		
IBC16-1084G	1 @ 300	33	1 @ 3	2	7.8	9.0	15	15	1	1	12.0	20		
IBC16-1096G	1 @ 390	32	1 @ 5	2	12.3	9.0	30	15	1	1	16.5	30		
IBC16-1108G	2 @ 230	35	1 @ 5	3	12.3	9.0/9.0	30	15/15	1	2	20.6	30		
IBC16-1120G	2 @ 300	35	1 @ 7.5	3	18.2	9.0/9.0	45	15/15	1	2	26.5	45		
IBC16-1132G	2 @ 300	34	1 @ 7.5	3	18.2	9.0/9.0	45	15/15	1	2	26.5	45		
IBC16-1144G	2 @ 300	34	1 @ 7.5	3	18.2	9.0/9.0	45	15/15	1	2	26.5	45		
IBC16-1156G	2 @ 345	38	1 @ 7.5	3	18.2	9.0/9.0	45	15/15	1	2	26.5	45		
IBC16-1168G	2 @ 345	34	1 @ 7.5	3	18.2	9.0/9.0	45	15/15	1	2	26.5	45		
IBC16-1180G	2 @ 390	36	1 @ 7.5	3	18.2	9.0/9.0	45	15/15	1	2	26.5	45		
IBC16-1192G	2 @ 390	32	1 @ 10	3	23.9	9.0/9.0	60	15/15	1	2	32.2	60		



INDUSTRIAL BELT DRIVE 16

Positive Indirect Gas Heated Air Curtain
Electrical Performance Sheet

480/3/60 (voltage code H)												
TOTAL MOTOR AMP DRAW												
MODEL	HEATER MBH	Temp Rise °F	Qty @ HP	# CKTS	MULTIPLE CKT - MOTOR PANEL & HEATER				SINGLE CKT - MOTOR PANEL & XFMR FOR HTR.			
					AMPS PER CIRCUIT		BREAKER RATING PER CIRCUIT		# CKTS	XFMR KVA	AMPS PER CIRCUIT (including XFMR)	BREAKER RATING PER CIRCUIT
					MOTOR 480V CKT	HEATER 120V CKT	MOTOR 480V CKT	HEATER 120V CKT				
IBC16-1060G	1 @ 230	32	1 @ 3	2	3.9	9.0	15	15	1	1	6.0	15
IBC16-1072G	1 @ 300	35	1 @ 3	2	3.9	9.0	15	15	1	1	6.0	15
IBC16-1084G	1 @ 300	33	1 @ 3	2	3.9	9.0	15	15	1	1	6.0	15
IBC16-1096G	1 @ 390	32	1 @ 5	2	6.2	9.0	15	15	1	1	8.3	20
IBC16-1108G	2 @ 230	35	1 @ 5	3	6.2	9.0/9.0	15	15/15	1	2	10.4	20
IBC16-1120G	2 @ 300	35	1 @ 7.5	3	9.1	9.0/9.0	25	15/15	1	2	13.3	25
IBC16-1132G	2 @ 300	34	1 @ 7.5	3	9.1	9.0/9.0	25	15/15	1	2	13.3	25
IBC16-1144G	2 @ 300	34	1 @ 7.5	3	9.1	9.0/9.0	25	15/15	1	2	13.3	25
IBC16-1156G	2 @ 345	38	1 @ 7.5	3	9.1	9.0/9.0	25	15/15	1	2	13.3	25
IBC16-1168G	2 @ 345	34	1 @ 7.5	3	9.1	9.0/9.0	25	15/15	1	2	13.3	25
IBC16-1180G	2 @ 390	36	1 @ 7.5	3	9.1	9.0/9.0	25	15/15	1	2	13.3	25
IBC16-1192G	2 @ 390	32	1 @ 10	3	12.0	9.0/9.0	30	15/15	1	2	16.2	30



INDUSTRIAL BELT DRIVE 16

**Positive Indirect Gas Heated Air Curtain
Electrical Performance Sheet**

600/3/60 (voltage code I)												
TOTAL MOTOR AMP DRAW												
MODEL	HEATER MBH	Temp Rise °F	Qty @ HP	# CKTS	MULTIPLE CKT - MOTOR PANEL & HEATER				SINGLE CKT - MOTOR PANEL & XFMR FOR HTR.			
					AMPS PER CIRCUIT		BREAKER RATING PER CIRCUIT		# CKTS	XFMR KVA	AMPS PER CIRCUIT (including XFMR)	BREAKER RATING PER CIRCUIT
					MOTOR 600V CKT	HEATER 120V CKT	MOTOR 600V CKT	HEATER 120V CKT				
IBC16-1060G	1 @ 230	32	1 @ 3	2	3.2	9.0	15	15	1	1	4.9	15
IBC16-1072G	1 @ 300	35	1 @ 3	2	3.2	9.0	15	15	1	1	4.9	15
IBC16-1084G	1 @ 300	33	1 @ 3	2	3.2	9.0	15	15	1	1	4.9	15
IBC16-1096G	1 @ 390	32	1 @ 5	2	5.1	9.0	15	15	1	1	6.8	15
IBC16-1108G	2 @ 230	35	1 @ 5	3	5.1	9.0/9.0	15	15/15	1	2	8.6	15
IBC16-1120G	2 @ 300	35	1 @ 7.5	3	7.2	9.0/9.0	15	15/15	1	2	10.7	15
IBC16-1132G	2 @ 300	34	1 @ 7.5	3	7.2	9.0/9.0	15	15/15	1	2	10.7	15
IBC16-1144G	2 @ 300	34	1 @ 7.5	3	7.2	9.0/9.0	15	15/15	1	2	10.7	15
IBC16-1156G	2 @ 345	38	1 @ 7.5	3	7.2	9.0/9.0	15	15/15	1	2	10.7	15
IBC16-1168G	2 @ 345	34	1 @ 7.5	3	7.2	9.0/9.0	15	15/15	1	2	10.7	15
IBC16-1180G	2 @ 390	36	1 @ 7.5	3	7.2	9.0/9.0	15	15/15	1	2	10.7	15
IBC16-1192G	2 @ 390	32	1 @ 10	3	9.6	9.0/9.0	20	15/15	1	2	13.1	20



INDUSTRIAL BELT DRIVE 16

Positive Indirect Gas Heated Air Curtain
Electrical Performance Sheet

380/3/50 (voltage code T)														
TOTAL MOTOR AMP DRAW														
				MULTIPLE CKT - MOTOR PANEL & HEATER					SINGLE CKT - MOTOR PANEL & XFMR FOR HTR.					
MODEL	HEATER MBH	Temp Rise °F	Qty @ HP	# CKTS	AMPS PER CIRCUIT		BREAKER RATING PER CIRCUIT		# CKTS	XFMR KVA	AMPS PER CIRCUIT (including XFMR)	BREAKER RATING PER CIRCUIT		
					MOTOR 380V CKT	HEATER 120V CKT	MOTOR 380V CKT	HEATER 120V CKT						
IBC16-1060G	1 @ 230	32	1 @ 3	2	3.9	9.0	15	15	1	1	6.5	15		
IBC16-1072G	1 @ 300	35	1 @ 3	2	3.9	9.0	15	15	1	1	6.5	15		
IBC16-1084G	1 @ 300	33	1 @ 3	2	3.9	9.0	15	15	1	1	6.5	15		
IBC16-1096G	1 @ 390	32	1 @ 5	2	6.2	9.0	15	15	1	1	8.8	15		
IBC16-1108G	2 @ 230	35	1 @ 5	3	6.2	9.0/9.0	15	15/15	1	2	11.5	15		
IBC16-1120G	2 @ 300	35	1 @ 7.5	3	9.1	9.0/9.0	25	15/15	1	2	14.4	25		
IBC16-1132G	2 @ 300	34	1 @ 7.5	3	9.1	9.0/9.0	25	15/15	1	2	14.4	25		
IBC16-1144G	2 @ 300	34	1 @ 7.5	3	9.1	9.0/9.0	25	15/15	1	2	14.4	25		
IBC16-1156G	2 @ 345	38	1 @ 7.5	3	9.1	9.0/9.0	25	15/15	1	2	14.4	25		
IBC16-1168G	2 @ 345	34	1 @ 7.5	3	9.1	9.0/9.0	25	15/15	1	2	14.4	25		
IBC16-1180G	2 @ 390	36	1 @ 7.5	3	9.1	9.0/9.0	25	15/15	1	2	14.4	25		
IBC16-1192G	2 @ 390	32	1 @ 10	3	12.0	9.0/9.0	30	15/15	1	2	17.3	30		

Page 5 of 5

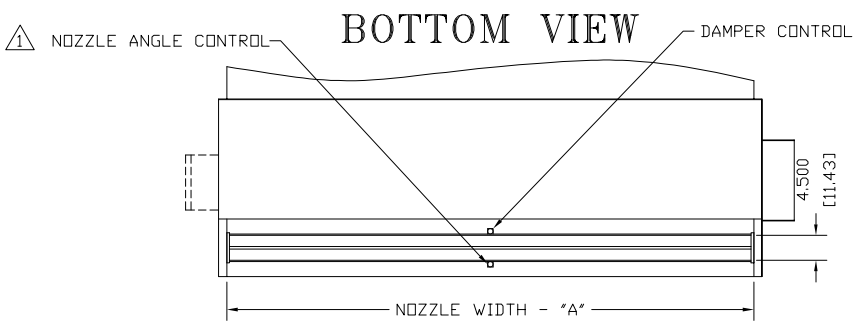
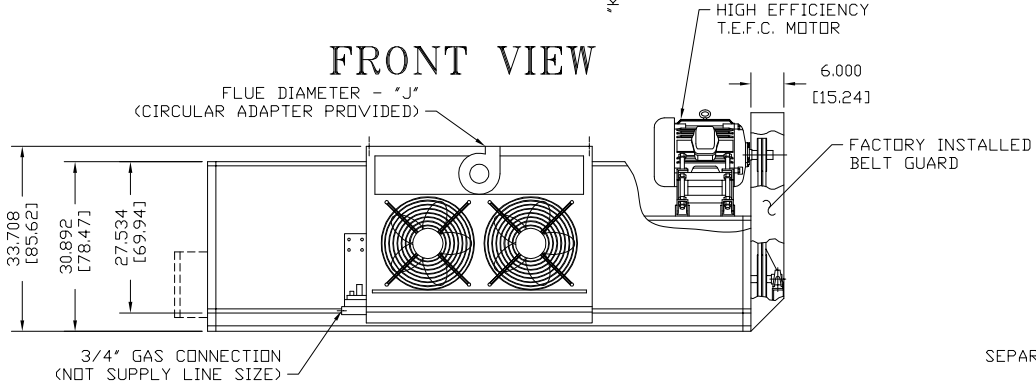
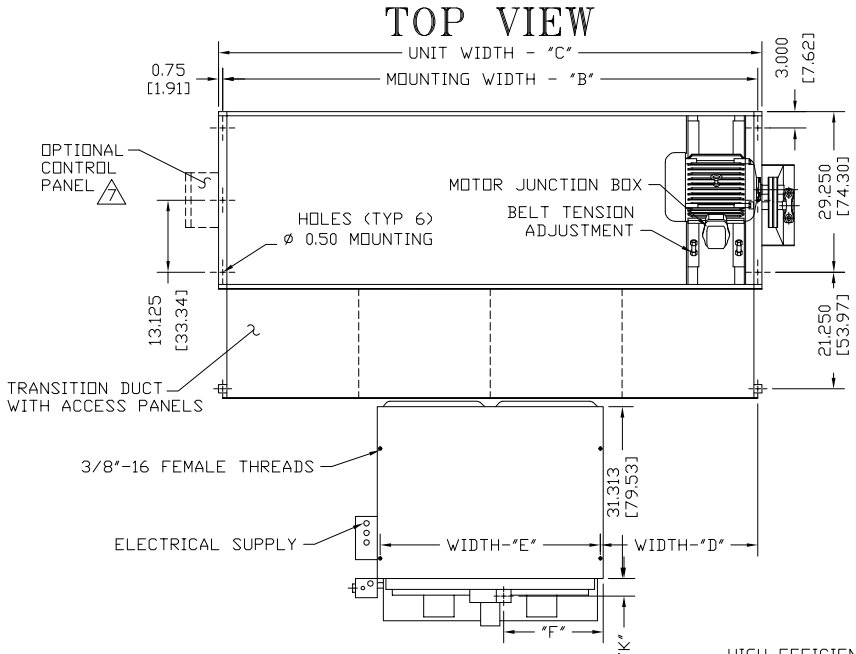
Berner reserves the right to alter specifications without prior notice.

www.berner.com Berner International 800.245-4455
111 Progress Ave. / New Castle / PA / 16101 / USA

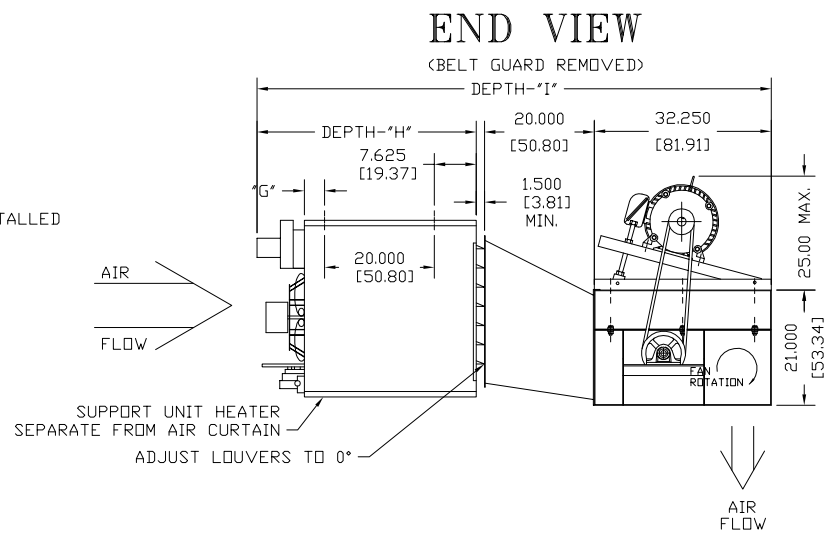
EP-438
December, 2018

©Copyright, 2018 Berner International

IBC 16 INDIRECT GAS HEATED ONE HEATER SYSTEM



- NOTES:**
- 1 AIR CURTAIN MUST BE INSTALLED SO AIR STREAM IS NOT OBSTRUCTED WHEN DEFLECTED 20° TO EITHER SIDE OF G.
 - 2 ELECTRICAL CONNECTIONS TO BE FLEXIBLE.
 - 3 FIELD VERIFY DIMENSIONS.
 - 4 ANCHORS TO SUPPORTING STRUCTURE BY OTHERS.
 - 5 ADEQUACY OF SUPPORTING STRUCTURE IS TO BE VERIFIED BY A PROFESSIONAL STRUCTURAL ENGINEER.
 - 6 LETTER "G" IN MODEL NUMBER DESIGNATES, POSITIVE INDIRECT GAS HEATED UNIT. "F" DESIGNATES FRONT INTAKE, "T" IS TOP MOTOR.
 - 7 OPTIONAL CONTROL PANEL AVAILABLE: LEFT HAND MOUNT, RIGHT HAND MOUNT, OR REMOTE. PLEASE SPECIFY.
 - 8 SUPPLY PRESSURES HIGHER THAN 0.50 POUND REQUIRE INSTALLATION OF AN ADDITIONAL SERVICE REGULATOR EXTERNAL TO THE UNIT.
 - 9 DIMENSIONS IN INCHES (CENTIMETERS).



CAUTION:
HEATER IS EQUIPPED FOR A MAXIMUM GAS SUPPLY PRESSURE OF 1/2 POUND, 8 OUNCES, OR 14 INCHES WATER COLUMN.

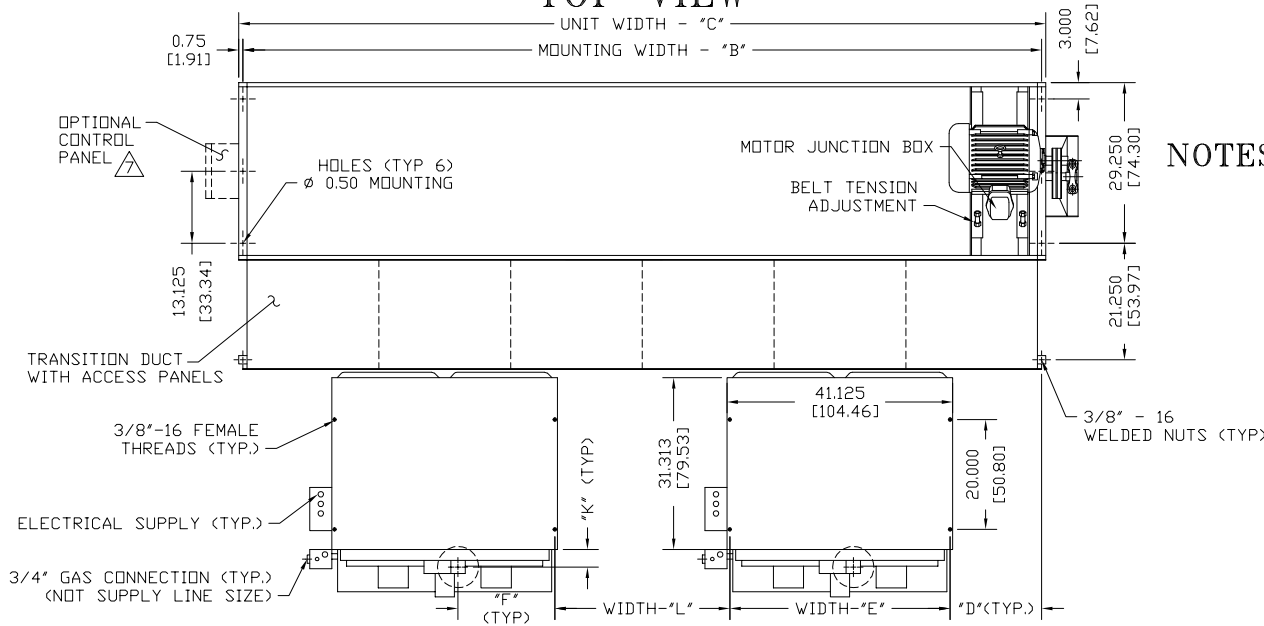
MODEL	TOTAL NO. HEATER(S) @ MBTU INPUT
IBC16-1060G-FT	1 @ 230
IBC16-1072G-FT	1 @ 300
IBC16-1084G-FT	1 @ 300
IBC16-1096G-FT	1 @ 390

PROJECT		
LOCATION		
ARCHITECT		
ENGINEER		
DWG. NO.	IBC16-IGF1	TITLE: BERNER
DATE	10JUNE14	MODEL IBC16 AIR CURTAIN
BY	S. Beil	INDIRECT GAS FIRED - ONE HEATER SYSTEM
REPLACES	-	
BY	-	BERNER INTERNATIONAL CORP. NEW CASTLE, PA.

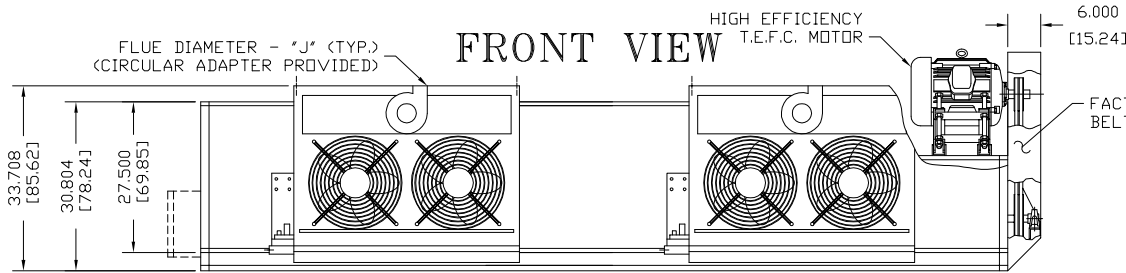
FOR DIMENSIONS SEE DWG. #IBC16-IGF3

TOP VIEW

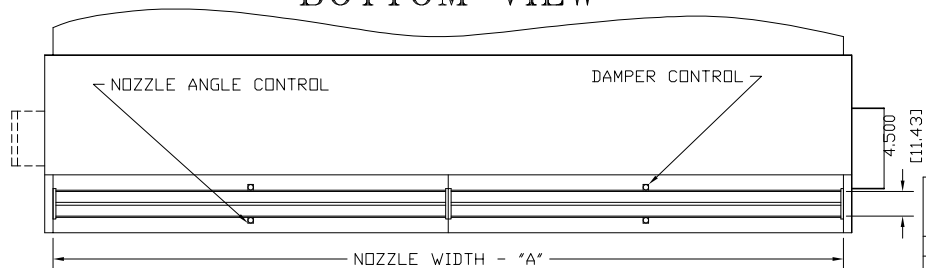
UNIT WIDTH - "C"
MOUNTING WIDTH - "B"



FRONT VIEW



BOTTOM VIEW

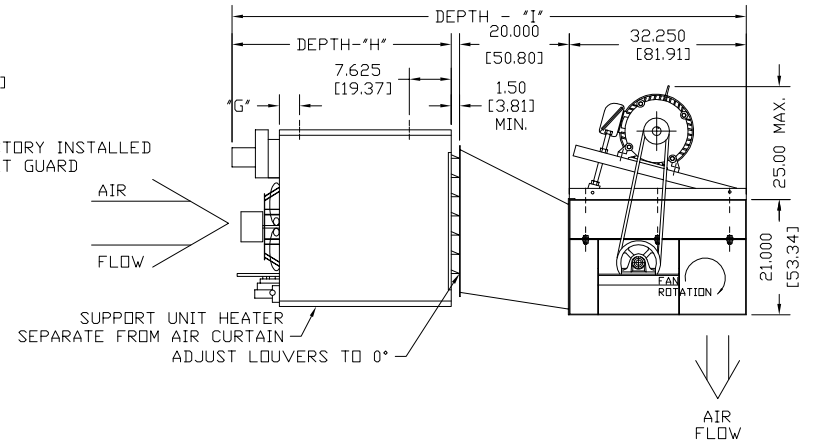


IBC 16

INDIRECT GAS HEATED TWO HEATER SYSTEM

- NOTES:**
- 1 AIR CURTAIN MUST BE INSTALLED SO AIR STREAM IS NOT OBSTRUCTED WHEN DEFLECTED 20° TO EITHER SIDE OF G.
 - 2 ELECTRICAL CONNECTIONS TO BE FLEXIBLE.
 - 3 FIELD VERIFY DIMENSIONS.
 - 4 ANCHORS TO SUPPORTING STRUCTURE BY OTHERS.
 - 5 ADEQUACY OF SUPPORTING STRUCTURE IS TO BE VERIFIED BY A PROFESSIONAL STRUCTURAL ENGINEER.
 - 6 LETTER "G" IN MODEL NUMBER DESIGNATES, POSITIVE INDIRECT GAS HEATED UNIT. "F" DESIGNATES FRONT INTAKE, "T" IS TOP MOTOR.
 - 7 OPTIONAL CONTROL PANEL AVAILABLE: LEFT HAND MOUNT, RIGHT HAND MOUNT, OR REMOTE. PLEASE SPECIFY.
 - 8 SUPPLY PRESSURES HIGHER THAN 0.50 POUND REQUIRE INSTALLATION OF AN ADDITIONAL SERVICE REGULATOR EXTERNAL TO THE UNIT.
 - 9 DIMENSIONS IN INCHES (CENTIMETERS).

END VIEW (BELT GUARD REMOVED)



CAUTION:

HEATER IS EQUIPPED FOR A MAXIMUM GAS SUPPLY PRESSURE OF 1/2 POUND, 8 OUNCES, OR 14 INCHES WATER COLUMN.

MODEL	TOTAL NO. HEATER(S) @ MBTU INPUT
IBC16-1108G-FT	2 @ 230
IBC16-1120G-FT	2 @ 300
IBC16-1132G-FT	2 @ 300
IBC16-1144G-FT	2 @ 300
IBC16-1156G-FT	2 @ 345
IBC16-1168G-FT	2 @ 345
IBC16-1180G-FT	2 @ 390
IBC16-1192G-FT	2 @ 390

PROJECT		
LOCATION		
ARCHITECT		
ENGINEER		
DWG. NO.	IBC16-IGF2	TITLE: BERNER
DATE	10 JUNE 14	MODEL IBC16 AIR CURTAIN
BY	S. Beil	INDIRECT GAS FIRED - TWO HEATER SYSTEM
REPLACES	-	
BY	-	BERNER INTERNATIONAL CORP. NEW CASTLE, PA.

FOR DIMENSIONS SEE DWG. #IBC16-IGF3

IBC16

INDIRECT GAS HEATED

MODEL	NOZZLE WIDTH "A"	MOUNTING WIDTH "B"	UNIT WIDTH "C"	TOTAL NO. HEATER(S) @ MBTU INPUT	WIDTH "D"	WIDTH "E"	WIDTH "F"	DEPTH "G"	DEPTH "H"	DEPTH "I"	FLUE "J"	DEPTH "K"	WIDTH "L"
IBC16-1060G-FT	60.00 [152.40]	61.50 [156.21]	63.00 [160.02]	1 @ 230	10.75 [27.31]	40.00 [101.60]	17.19 [43.66]	3.69 [9.37]	40.00 [101.60]	93.75 [238.13]	5.00 [12.70]	3.50 [8.89]	-
IBC16-1072G-FT	72.00 [182.88]	73.50 [186.69]	75.00 [190.50]	1 @ 300	16.75 [42.55]	40.00 [101.60]	17.19 [43.66]	3.69 [9.37]	40.00 [101.60]	93.75 [238.13]	5.00 [12.70]	3.50 [8.89]	-
IBC16-1084G-FT	84.00 [213.36]	85.50 [217.17]	87.00 [220.98]	1 @ 300	22.75 [57.79]	40.00 [101.60]	17.19 [43.66]	3.69 [9.37]	40.00 [101.60]	93.75 [238.13]	5.00 [12.70]	3.50 [8.89]	-
IBC16-1096G-FT	96.00 [243.84]	97.50 [247.65]	99.00 [251.46]	1 @ 390	28.75 [73.03]	40.00 [101.60]	16.94 [43.02]	3.69 [9.37]	41.13 [104.46]	94.88 [240.98]	6.00 [15.24]	3.50 [8.89]	-
IBC16-1108G-FT	108.00 [274.32]	109.50 [278.13]	111.00 [281.94]	2 @ 230	7.75 [19.69]	40.00 [101.60]	17.19 [43.66]	3.69 [9.37]	40.00 [101.60]	93.75 [238.13]	5.00 [12.70]	3.50 [8.89]	14.00 [35.56]
IBC16-1120G-FT	117.00 [297.18]	118.50 [300.99]	120.00 [304.80]	2 @ 300	10.00 [25.40]	40.00 [101.60]	17.19 [43.66]	3.69 [9.37]	40.00 [101.60]	93.75 [238.13]	5.00 [12.70]	3.50 [8.89]	18.50 [46.99]
IBC16-1132G-FT	132.00 [335.28]	133.50 [339.09]	135.00 [342.90]	2 @ 300	13.75 [34.93]	40.00 [101.60]	17.19 [43.66]	3.69 [9.37]	40.00 [101.60]	93.75 [238.13]	5.00 [12.70]	3.50 [8.89]	26.00 [66.04]
IBC16-1144G-FT	144.00 [365.76]	145.50 [369.57]	147.00 [373.38]	2 @ 300	16.75 [42.55]	40.00 [101.60]	17.19 [43.66]	3.69 [9.37]	40.00 [101.60]	93.75 [238.13]	5.00 [12.70]	3.50 [8.89]	32.00 [81.28]
IBC16-1156G-FT	156.00 [396.24]	157.50 [400.05]	159.00 [403.86]	2 @ 345	19.75 [50.17]	40.00 [101.60]	16.94 [43.02]	3.69 [9.37]	41.13 [104.46]	94.88 [240.98]	6.00 [15.24]	3.50 [8.89]	38.00 [96.52]
IBC16-1168G-FT	168.00 [426.72]	169.50 [430.53]	171.00 [434.34]	2 @ 345	22.75 [57.79]	40.00 [101.60]	16.94 [43.02]	3.69 [9.37]	41.13 [104.46]	94.88 [240.98]	6.00 [15.24]	3.50 [8.89]	44.00 [111.76]
IBC16-1180G-FT	180.00 [457.20]	181.50 [461.01]	183.00 [464.82]	2 @ 390	25.75 [65.41]	40.00 [101.60]	16.94 [43.02]	3.69 [9.37]	41.13 [104.46]	94.88 [240.98]	6.00 [15.24]	3.50 [8.89]	50.00 [127.00]
IBC16-1192G-FT	192.00 [487.68]	193.50 [491.49]	195.00 [495.30]	2 @ 390	28.75 [73.03]	40.00 [101.60]	16.94 [43.02]	3.69 [9.37]	41.13 [104.46]	94.88 [240.98]	6.00 [15.24]	3.50 [8.89]	56.00 [142.24]

NOTES:

- ① AIR CURTAIN MUST BE INSTALLED SO AIR STREAM IS NOT OBSTRUCTED WHEN DEFLECTED 20° TO EITHER SIDE OF \bar{C} .
- ② ELECTRICAL CONNECTIONS TO BE FLEXIBLE.
- ③ FIELD VERIFY DIMENSIONS.
- ④ ANCHORS TO SUPPORTING STRUCTURE BY OTHERS.
- ⑤ ADEQUACY OF SUPPORTING STRUCTURE IS TO BE VERIFIED BY A PROFESSIONAL STRUCTURAL ENGINEER.
- ⑥ LETTER "G" IN MODEL NUMBER DESIGNATES POSITIVE INDIRECT GAS HEATER UNIT. "F" DESIGNATES FRONT INTAKE, "T" IS TOP MOTOR.
- ⑦ OPTIONAL CONTROL PANEL AVAILABLE: LEFT HAND MOUNT, RIGHT HAND MOUNT, OR REMOTE. PLEASE SPECIFY.
- ⑧ SEP 230-400 FURNACES HAVE TWO FANS AND FOUR MOUNTING POINTS.
- ⑨ SUPPLY PRESSURES HIGHER THAN 0.50 POUND REQUIRE INSTALLATION OF AN ADDITIONAL SERVICE REGULATOR EXTERNAL TO THE UNIT.
- ⑩ DIMENSIONS IN INCHES [CENTIMETERS].

PROJECT		
LOCATION		
ARCHITECT		
ENGINEER		
DWG. NO.	IBC16-IGF3	TITLE: BERNER
DATE	10JUNE14	MODEL IBC16 AIR CURTAIN
BY	S. Beil	INDIRECT GAS FIRED HEATER SYSTEM
REPLACES	-	
BY	-	BERNER INTERNATIONAL CORP. NEW CASTLE, PA.